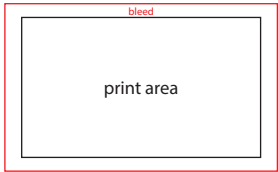


Instructions:

These are the instructions for submitting a **custom match jar label design**. We accept Adobe Illustrator and Canva design files. If you have questions or need assistance, please email brittany@vellabox.com

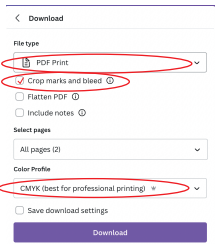
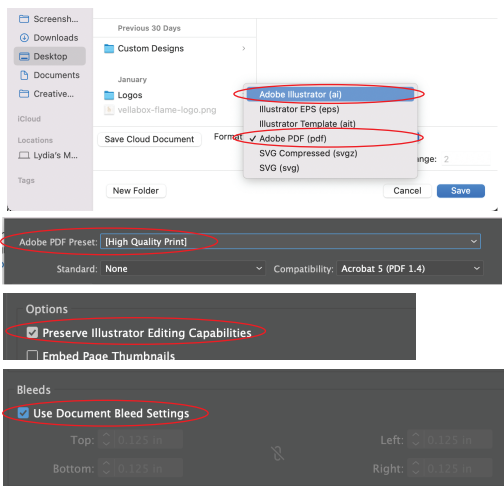
1. Create your artboard in your design platform of choice (*Adobe Illustrator or Canva are preferred*). The white space within the black box represents the visible print area. The red line represents the extra 0.125" print bleed. Sizing specs are provided below.



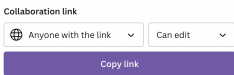
Match Jar Label (one size):
2.5" W x 1.5" H
w/ 0.125" print bleed

2. Create your design - reference the design notes below. Make sure to extend your background to the red line.
3. **Adobe users** - Save your final designs as an .ai file or .pdf file
Canva users - save as a PDF print file or share a collaboration link with access to edit.

Illustrator



Canva



4. Email your final designs back to brittany@vellabox.com. We will get back to you within 3 business days with a digital design proof. Revisions are accepted. Once you've approved the design, your order will go into production.

Design Notes:

1. Consider contrast when choosing colors. For example, if light colored text is printed on a light background, it may be hard to read.
2. Designs should be in CMYK color profile (best for professional printing)
3. Make sure to use high quality logo or image files to avoid any blurriness or pixelation (vector files recommended - AI, EPS, SVG, or PDF)